



Akemat F3 CNC Conversion

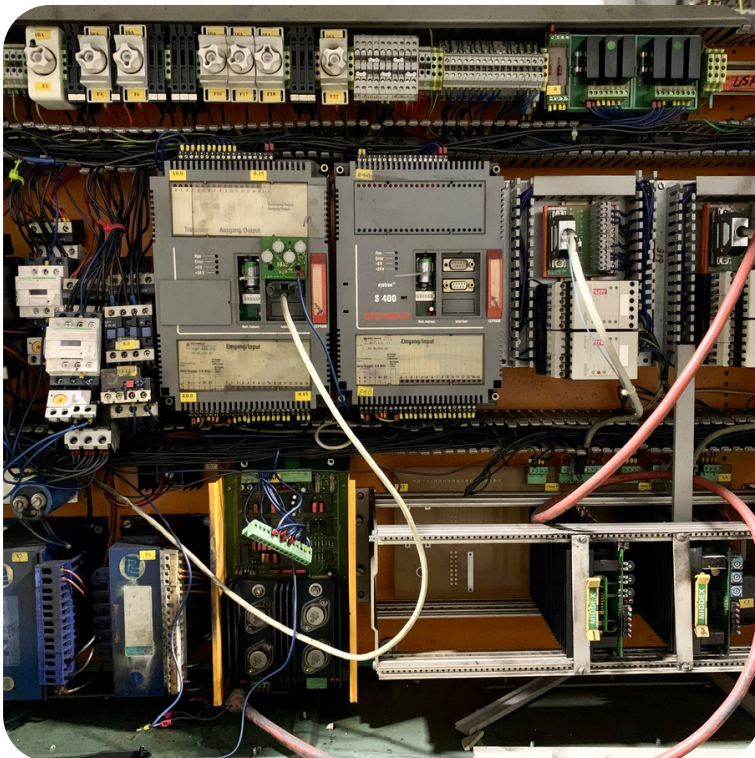
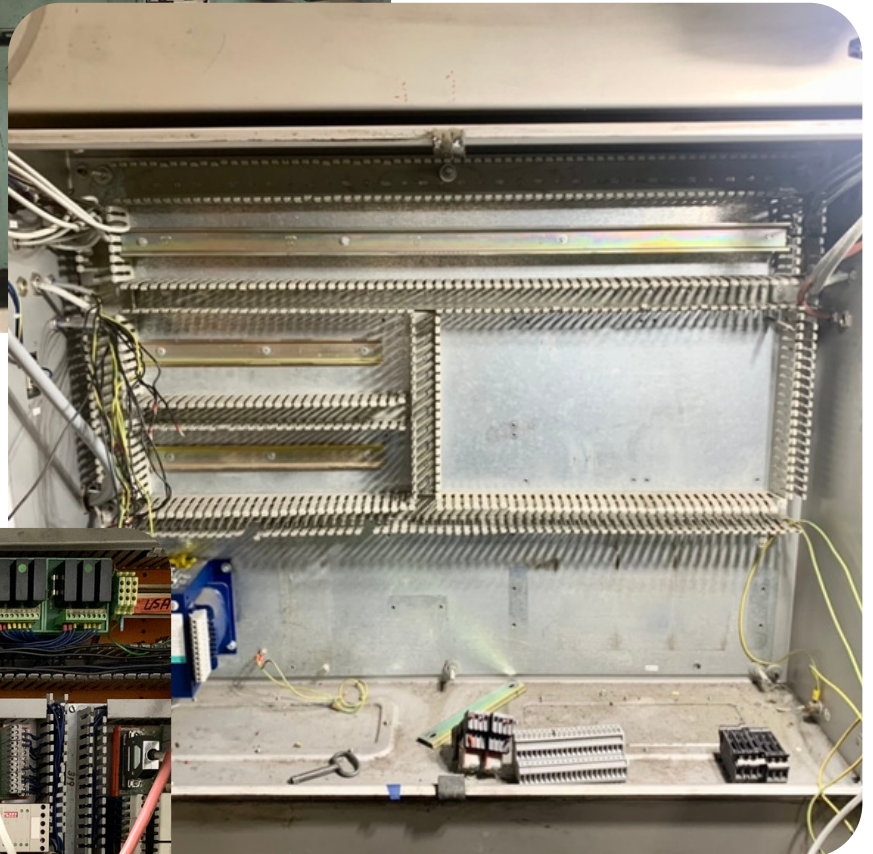
Do you have an Akemat F3 that could use an upgrade? Equipment, Ltd. is giving new life to older F3's by converting them to CNC. This machine is the first of it's kind with all new CNC drives, an HMI touch screen display, and all new operating software. No matter the condition, send us your machine and our technicians will have it running like new again in two weeks.

About the Conversion Process



Our technicians begin by removing all the previous wiring and dated electronics from the machine in preparation for the new CNC set up. Once the new drives, contactors, heaters, communication switch, PLC, power supply, and the HMI touch screen have been mounted into place, everything can be wired up. The technicians will then calibrate the machine and test grind extensively before sending it back out for 30 more years of grinding. Customers have the option to add a custom hood and have the machine powder coated for an additional cost.

Before the Conversion



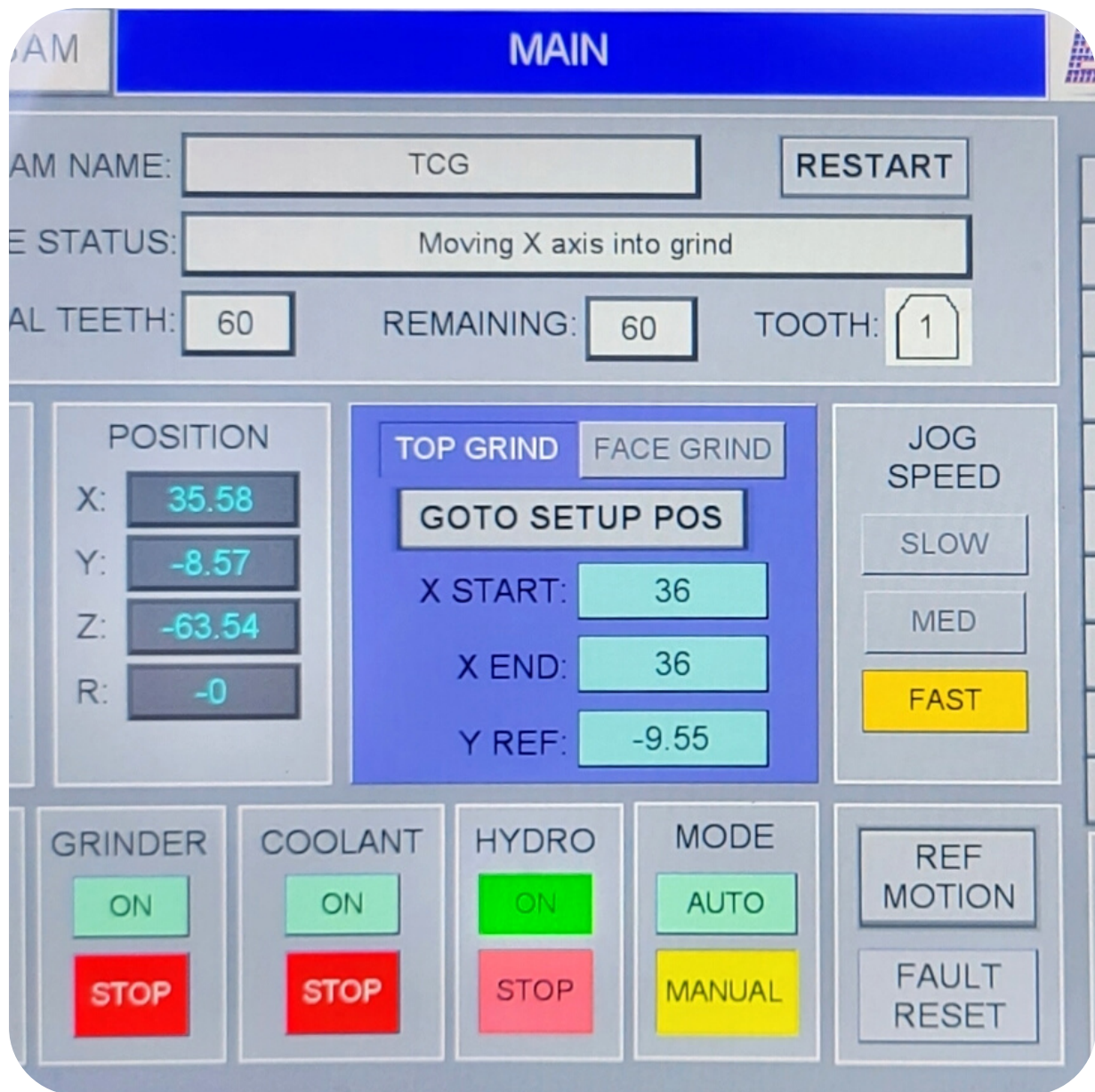
After the Conversion



(pictured machine has a custom hood & has been powder coated, this is a customer add on option. If you do not choose this add on option, your machine will remain as is.)



Conversion Capabilities



New Capabilities:

- Graphical user interface with HMI touch screen
- Simplified programming software
- Tooth configurations of any style, capable in one revolution.

Contact Information

Telephone: 828-328-8104

Toll Free: 1-800-533-2006

Fax: 828-322-4928

Email: sales@equipmentltd.com

Mailing Address:

311 15th Street SW
Hickory, NC 28602

P.O. Box 3508

Hickory, NC 28603

Website: www.sawgrinder.com

Facebook: www.facebook.com/equipmentltd

Instagram Handle: @equipment_ltd

Youtube: www.youtube.com/equipmentltd